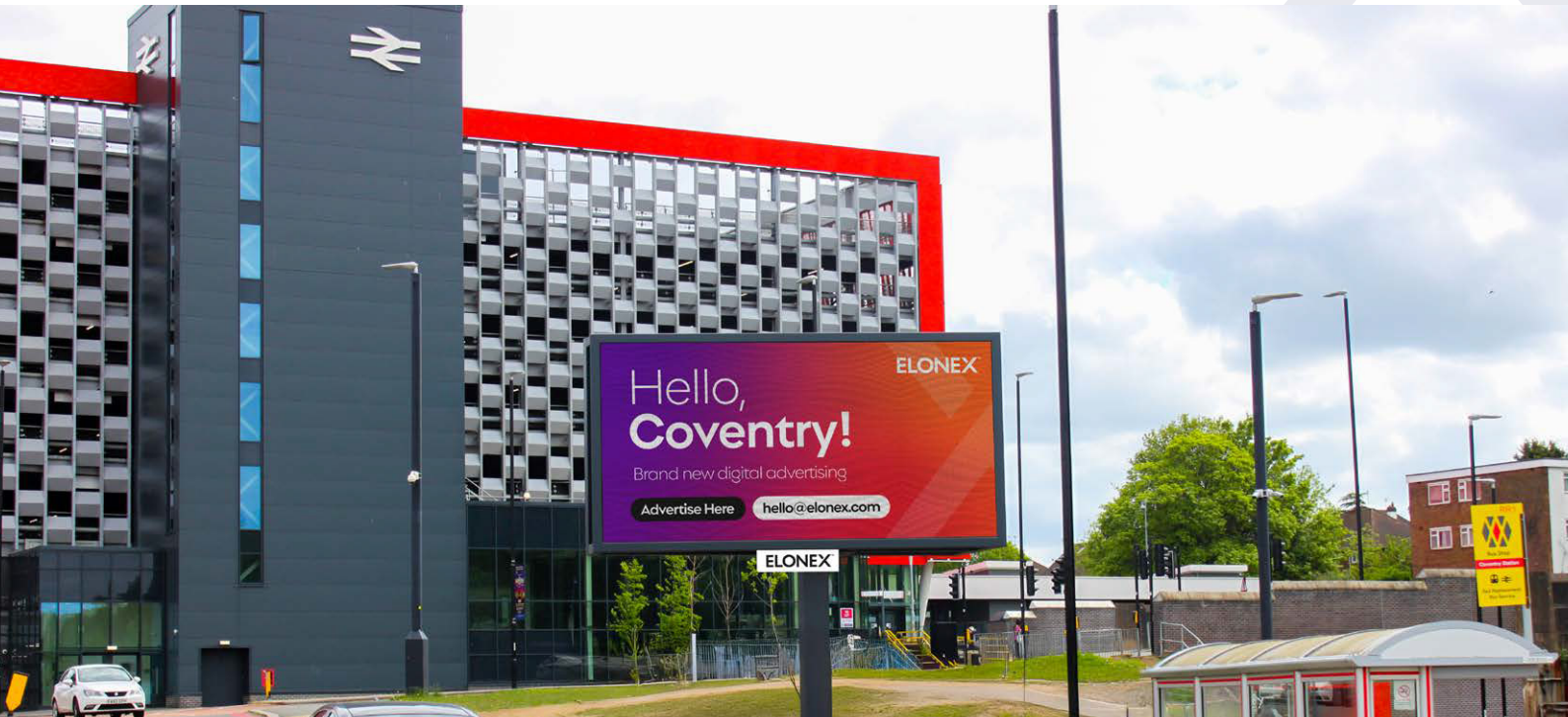


# Coventry One D48 (Inbound & Outbound)

## Digital screen artwork specifications



### Artwork specs

#### **900 pixels wide x 450 pixels high**

Artwork must be created to the exact stated pixel resolution. No trim or bleed is required.

#### **Static display type**

Image or video files are accepted on this screen. Definitions of display types can be found at [elonex.com/creativeguidelines](https://elonex.com/creativeguidelines)

#### **10 second duration**

Our standard advert duration.

### File formats

#### **.JPG or .PNG** for static artwork

Minimum 72 DPI. RGB colour mode. Max size 25 MB.

### Deadlines

Final artwork must be submitted  
**5 working days** before the start date

Design briefs must be provided no less than 14 working days before the start date.

### File naming

#### **CoventryOneD48-ClientName.fileformat**

If specific day parting/advert playback is required, please label your files accordingly.

### Delivery & contact

For queries and delivery please  
**email:** [creative@elonex.com](mailto:creative@elonex.com)  
**(Please CC your account manager)**  
**or call:** 0871 222 3456

Files can also be sent via [WeTransfer.com](https://www.wetransfer.com)

## New to digital out of home?

For tips on creating artwork and making the most out of your campaign, visit [elonex.com/creativeguidelines](https://elonex.com/creativeguidelines)

**ELONEX™**