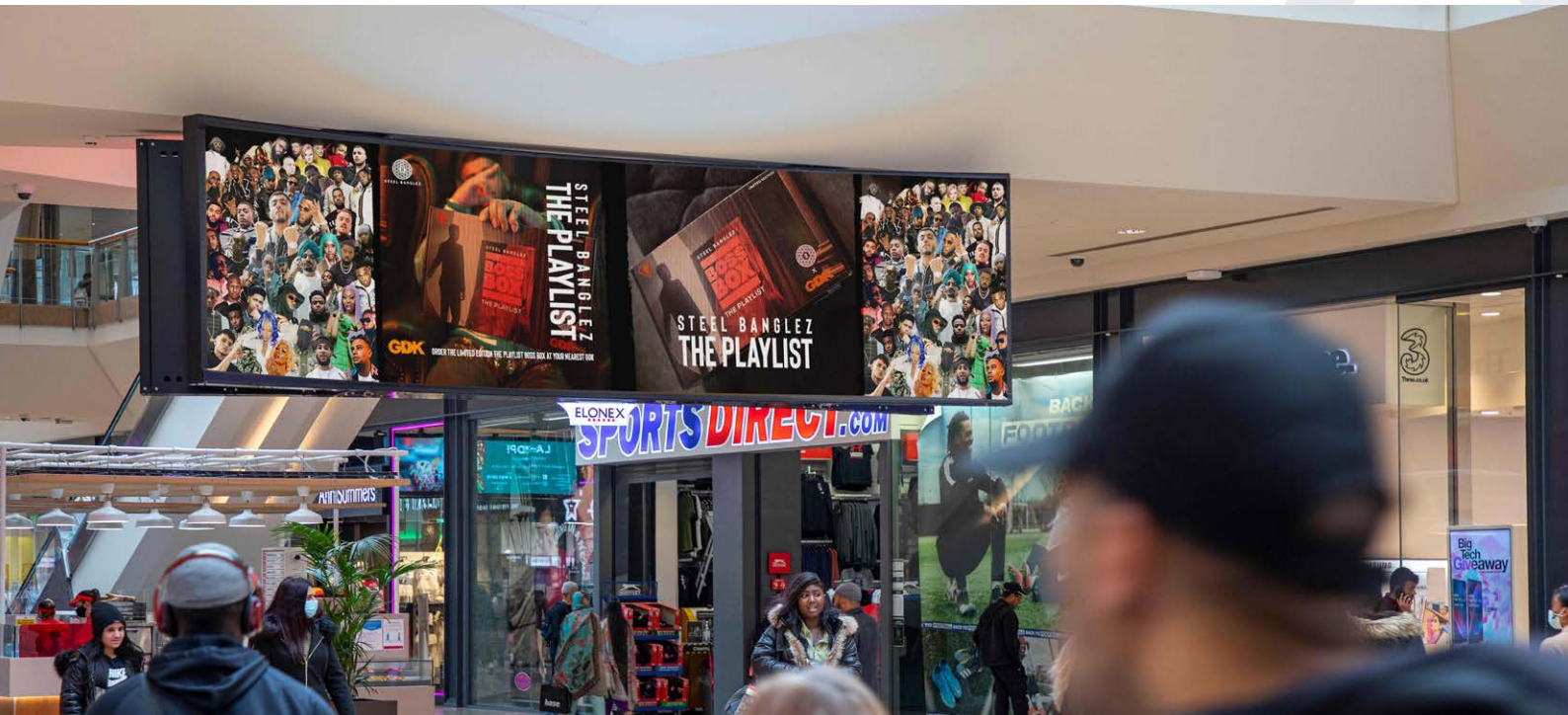


# Panvision Screen

## Digital artwork specifications



### Artwork specs

**2304 pixels wide x 576 pixels high**

Artwork must be created to the exact stated pixel resolution. No trim or bleed is required.

**Full motion** display type

Image or video files are accepted on this screen. Definitions of display types can be found at [elonex.com/creativeguidelines](http://elonex.com/creativeguidelines)

**10 second** duration

Our standard advert duration.

### File formats

**.JPG** or **.PNG** for static artwork

Minimum 72 DPI. RGB colour mode. Max size 25 MB.

**.MP4** for video artwork

25 FPS. No audio. Max size 25 MB.

### Deadlines

Final artwork must be submitted **5 working days** before the start date

Design briefs must be provided no less than 14 working days before the start date.

### File naming

**Panvision-ClientName.fileformat**

If specific day parting/advert playback is required, please label your files accordingly.

### Delivery & contact

For queries and delivery please **email:** [creative@elonex.com](mailto:creative@elonex.com)  
**(Please CC your account handler)**  
**or call:** 0871 222 3456

Files can also be sent via [WeTransfer.com](http://WeTransfer.com)

## New to digital out of home?

For tips on creating artwork and making the most out of your campaign, visit [elonex.com/creativeguidelines](http://elonex.com/creativeguidelines)

**ELONEX**