



NATIONAL
FOOTBALL
MUSEUM

Manchester City Centre Digital 48 Sheet Screen



ELONEX

New Digital 48 Sheet Screen at the Heart of Manchester's Medieval Quarter, a Major Visitor Destination and the iconic Northern Gateway to the City Centre



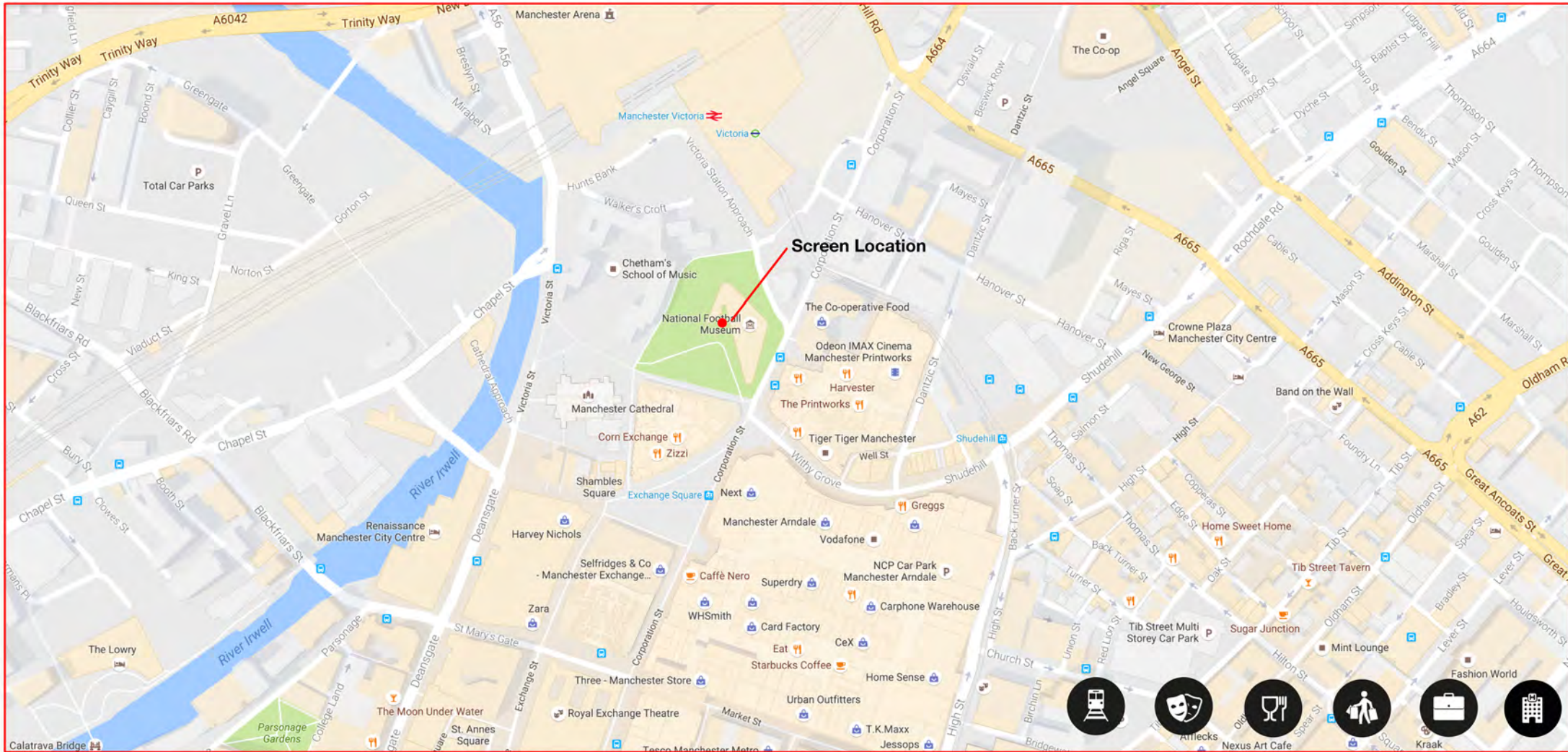
Featuring market leading **Elonex P8** High Density LED Visual Technology



- Targeting an Annual Footfall of 85 Million to City Centre destinations in the area, visiting The National Football Museum, Cathedral Gardens, the Corn Exchange, Chetham's School of Music, The Printworks, Victoria Station and Arndale Manchester.

- Dominating the Northern Gateway to Manchester's Leisure, Retail and Business Districts, and capturing footfall on route to City Centre developments NOMA, Metrolink Second City Crossing and Greengate.

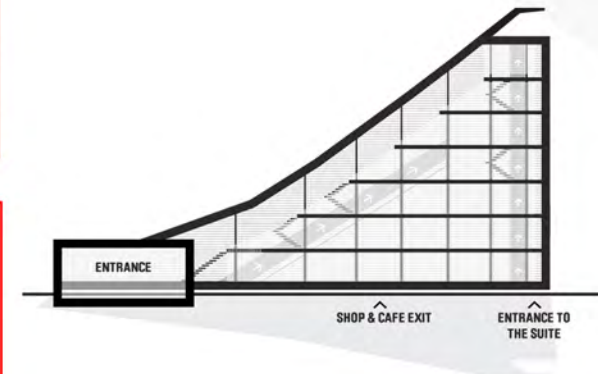
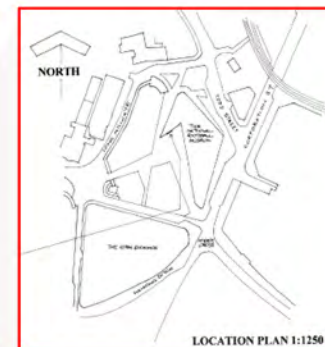
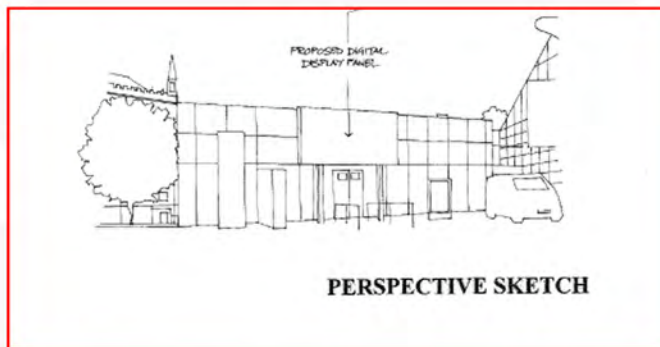
National Football Museum Location



Large-Format, Real Time and Interactive Digital Advertising Opportunities in Manchester City Centre



- Located at the Heart of Major City Centre Visitor Destinations
- Targeting the Gateway to Manchester's core Retail and Business Districts
- Engaging with Big Number & Clearly Defined Audiences
- Providing High 24/7 Visibility to Capture Manchester's Vibrant City Centre Culture
- Delivering High Impact and Effective Campaigns to Multiple Audience Profiles
- Lighting Up one of Manchester's Most Dynamic Landscapes
- Standing Out at the centre of rapid Leisure, Retail and Business Growth





Rate Card £3,500 / 2 Weeks
Planning Rate £2,275 / 2 Weeks
Commuter AM (6am -10am) + PM
(4pm-8pm) Planning Rate £1,500
Single Slot Commuter AM or PM
Planning Rate £975
Consumer (10am-4pm)
Planning Rate £1,250

FOOTBALL MUSEUM
HISTORY
SKILL
ART



- Manchester City Centre
- Medieval District & Northern Gateway
- Digital 48 Sheet
- P8 Elonex Technology
- Launch Date 8th May 2017

ELONEX



Edgbaston Stadium, Edgbaston Road, Edgbaston, B5 7QU | T : +44 (0) 871 222 3456 | DD : +44 (0) 121 270 8550 | W : www.elonex.com